

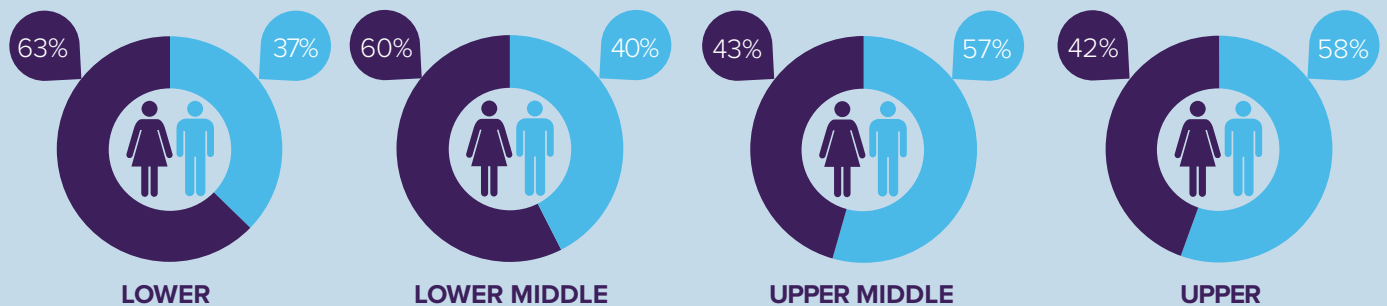
At Countrywide Group, we pride ourselves on our people who are our greatest asset and we champion the opportunities open to all our people throughout their career. Our business fosters an environment of opportunity and we firmly believe in promotion from within and appointing the right person for the role, based solely on ability.

## gender pay & bonus gap

	MEAN	MEDIAN
HOURLY PAY	15%	24%
BONUS	15%	22%

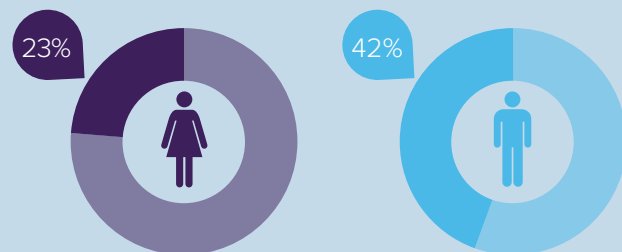
The hourly gender pay gap is the difference between the average hourly pay rate for males and females for the month of April 2022 expressed as a % of the male average. The bonus pay gap is the difference between the average of all bonuses, including commissions, paid to male and female employees in the 12 months up to and including April 2022 expressed as a % of the male average. "Average" is calculated in two ways, mean and median. The mean is the total male or female pay divided by the total number of males or females. The median is the pay received by the middle male or female when all hourly rates or bonuses are ranked in order.

## pay quartiles



Our figures show the average hourly pay for male employees is more than female employees. This is due to a higher proportion of senior roles being occupied by men, creating the gap, and a higher proportion of lower paid administrative roles tending to be occupied by women. The gender pay gap demonstrates the overall difference in average earnings (mean and median) between men and women. This is not the same as equal pay, which is the difference between men and women carrying out the same role, similar roles or roles of equal value. Our policy is to pay men and women equally for doing equivalent jobs across our business.

## proportion of males & females receiving a bonus



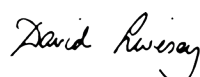
There has been a significant improvement in both the mean and median pay gaps when compared to 2021 data. This improvement is partly due to restructuring of senior management following acquisition of the Countrywide Group in March 2021 by Connells Group.

This has also resulted in a significant improvement in the mean and median bonus gap however, as there is greater representation of males in the top pay quartile where roles attract a bonus, this continues to drive the overall bonus gap.

## our view

Our approach is to ensure we have the right person in each role, irrespective of gender. We are committed to a culture of meritocracy whereby career progression is based entirely on ability. We will continue to facilitate opportunities for all our people to progress and make sure that we regularly review fair practices and policies. We will continue to ensure we have a working environment where everyone has the same chance to be successful and where opportunities for development, promotion, recognition and rewards for excellence are irrespective of gender. We will continue to ensure that our approach to setting pay is fair, and that people performing similar roles, with similar experience, will be treated equally. Our people are our most valuable asset and we are committed to investing in them to achieve their full potential with no discrimination.

I confirm the data in this report to be accurate  
David Livesey, Chief Executive



For the purposes of gender pay gap reporting, 'pay' is calculated as an hourly rate (as at 5 April 2022). In addition to basic salary, the hourly rate calculation includes a number of other payments e.g. specific allowances and monthly bonuses.